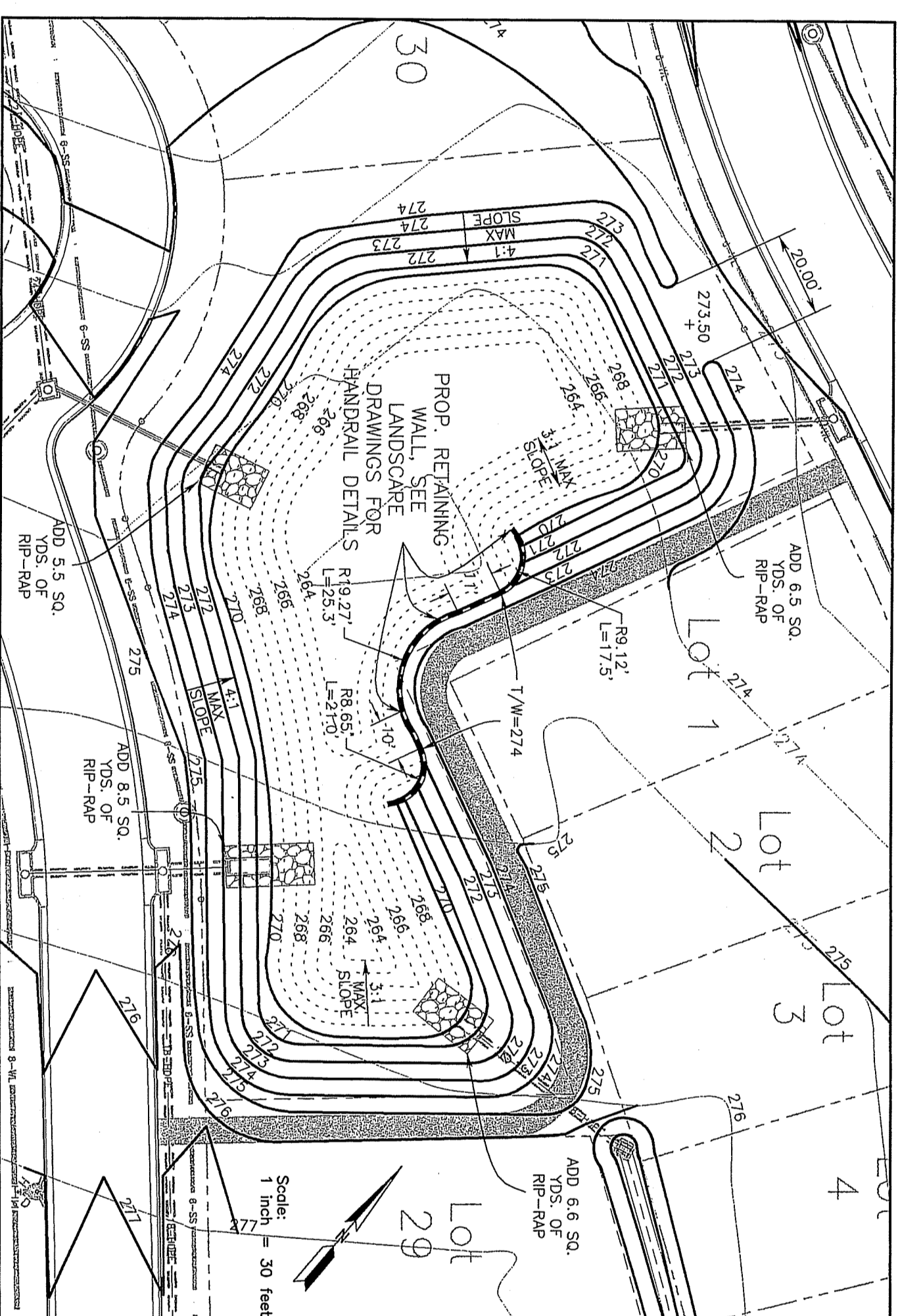
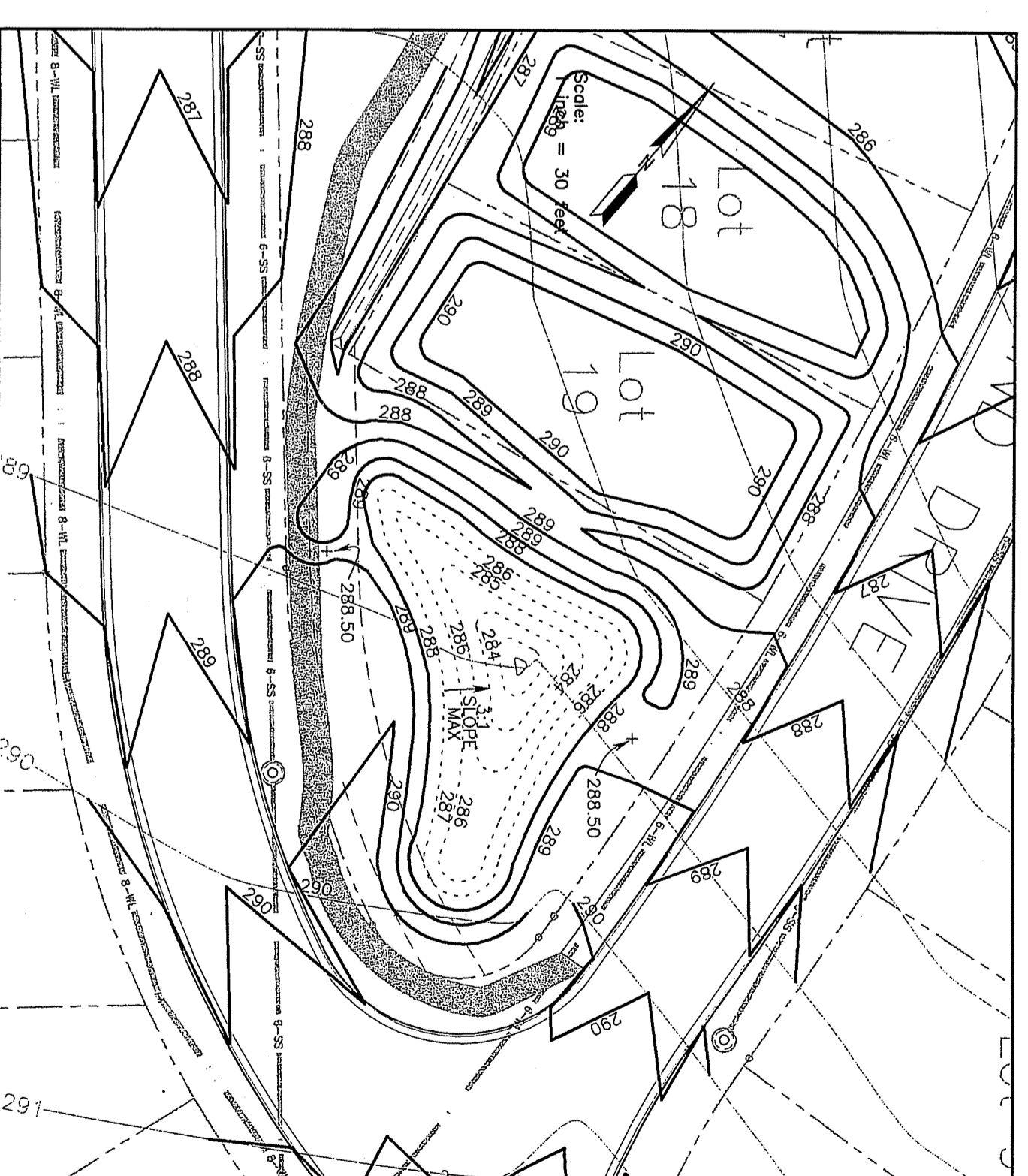


POND NO. 1
PERM. POOL ELEV= 265.00



POND NO. 3
PERM. POOL ELEV= 270.00



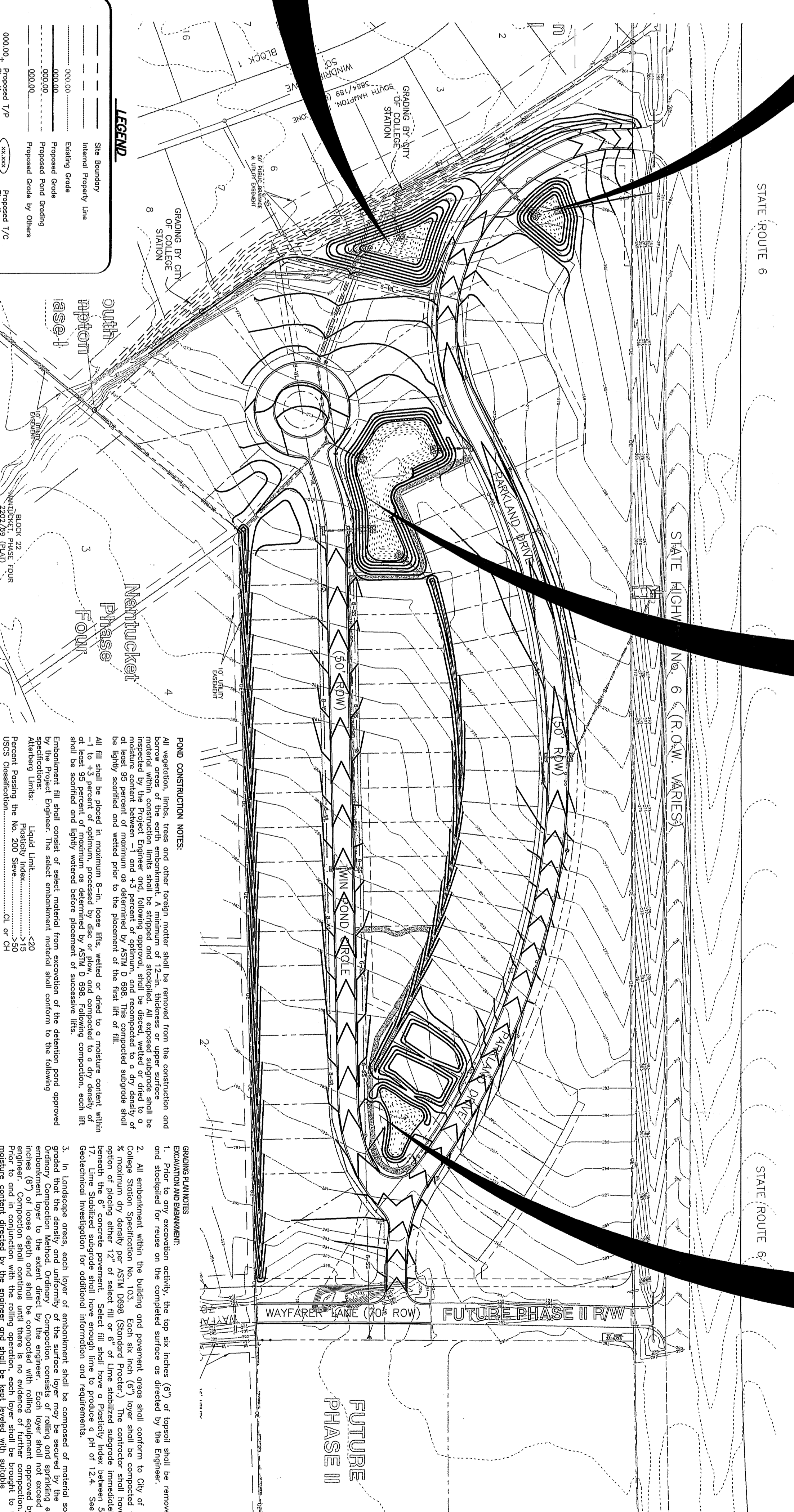
POND NO. 4
PERM. POOL ELEV= 288.00



POND NO. 2
PERM. POOL ELEV= 263.00

LEGEND

Site Boundary	-----
Internal Property Line	-----
Existing Grade
Proposed Grade
Proposed Pond Grading
Proposed Grade by Others
000.00 ₄ Proposed 1/4" Elevation
000.00 ₂ Proposed 1/2" Elevation
000.00 ₁ Proposed 1/8" Elevation
1/4" = Top of Pavement
1/8" = Top of Curb



SITE MAP
1 inch = 90 feet

POND CONSTRUCTION NOTES:

1. All vegetation, limbs, trees and other foreign matter shall be removed from the construction and construction area. The contractor shall be responsible for the removal of all such material. The contractor shall be responsible for the removal of all such material. The contractor shall be responsible for the removal of all such material.

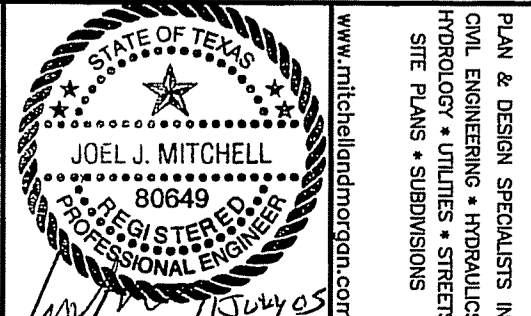
GRADING PLAN NOTES:

1. Prior to any excavation activity, the top six inches (6") of topsoil shall be removed and stockpiled for reuse on the completed surface as directed by the Engineer.

NOTE:
USE 6" MINIMUM DIAMETER RPP RAP AT PROPOSED HEADWALLS.



MITCHELL
MORGAN
1979.260.6963
F.979.260.3564
511 UNIVERSITY DRIVE EAST
SUITE 204
COLLEGE STATION, TX 77840



PAUL & DEBRA SPECIALISTS IN
CIVIL ENGINEERING • HYDRAULICS
HYDROLOGY • URBAN DESIGN
SITE PLANS • SUBDIVISIONS
www.mitchellmorgan.com

Prepared For:
Nantucket Cove, LTD
1445 NORTH LOOP WEST
SUITE 840
HOUSTON, TX 77008
(713) 802-9292

Revisions

Pond Grading &
Drainage Plan
COVE OF NANTUCKET

13
OF 20 Sheets

REVIEWED FOR
COMPLIANCE
JUL 25 2005
COLLEGE STATION
ENGINEERING